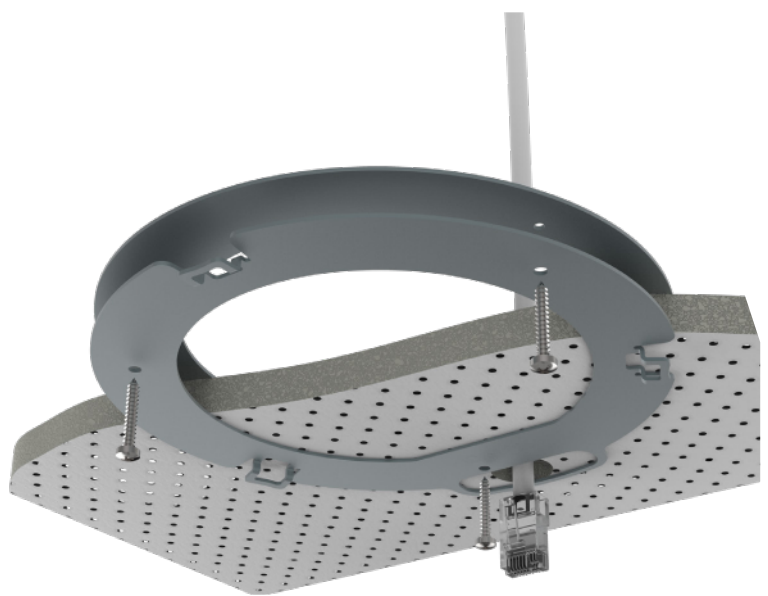


cAP 2nD

RouterBOARD cAP-2nD (ceiling Access Point) is our first 2.4 GHz Dual-Chain ceiling AP. Inconspicuously designed, it blends into the environment, perfect for hospitality business like hotels, airports, shopping malls etc.

cAP-2nD supports 802.11b/g/n and can be powered by PoE. It's a perfect companion for the MikroTik CAPsMAN (controlled AP system manager), allowing you to control all your AP devices from one central location.



24 V 0.38 A
power adapter



Ceiling mount



PoE injector



K-46 screw kit

Unlike traditional controller software, which requires a separate PC/Mac to run, our CAPsMAN runs on any existing RouterBOARD device in your network. No need for a separate controller machine. Everything is included to get you started, wall/ceiling mount, PoE injector, power adapter and even the screws and screw anchors.

Specifications

Product code	RBcAP2nD
CPU	QCA9533 650 MHz
Memory	64 MB
Storage type	Flash
Storage size	16 MB
Ethernet	One 10/100 Mbit/s Fast Ethernet port with Auto-MDI/X
Wireless	QCA9533, wireless built-in 2.4 GHz 802.11b/g/n, dual chain
Wireless regulations	Specific frequency range may be limited by country regulations
Power options	PoE 802.3af/at, 11-57 V
Consumption	4W
Dimensions	Diameter 138mm, height: 31mm
Operating temperature	-40°C .. +70°C tested
LEDs	5x LEDs, 1x user LED
License level	4
Operating system	RouterOS
Antenna gain	2 dBi

Wireless specifications

Rate	Tx	Rx
1MBit/s	22	-96
11MBit/s	22	-89
6MBit/s	20	-93
54MBit/s	18	-74
MCS0	20	-93
MCS7	16	-71