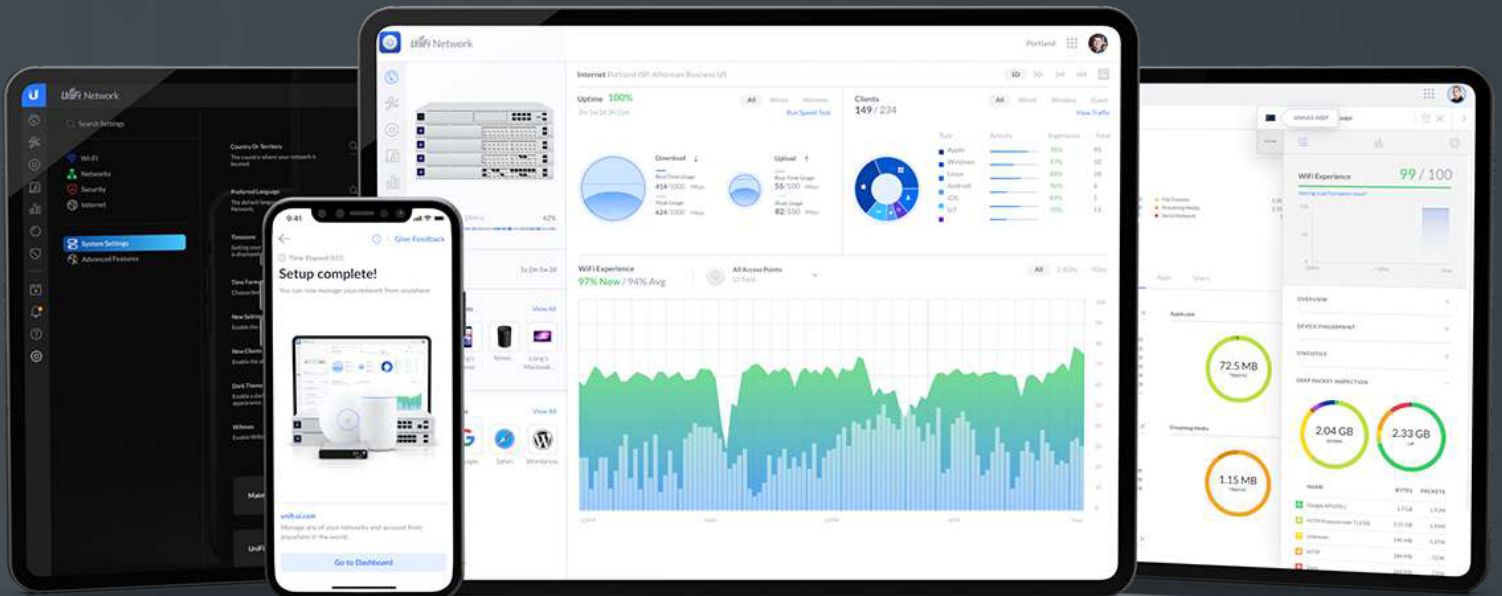


UniFi[®] Network



UniFi Switch 24

USW-24 is a managed Layer 2 switch with (24) Gigabit Ethernet ports and (2) SFP ports. Its compact 7.9" depth and fanless design allow it to be placed in any workspace, and the 1.3" touchscreen provides current switch states and the necessary information you need for quick diagnosis.



Mechanical

Dimensions	442.4 x 200 x 43.7 mm (17.42 x 7.87 x 1.72")
Weight	Without Mount: 2.70 kg (5.95 lb) With Mount: 2.79 kg (6.15 lb)
Enclosure Material	SGCC Steel

Hardware

Total Non-Blocking Throughput	26 Gbps
Switching Capacity	52 Gbps
Forwarding Rate	38.69 Mpps
Max. Power Consumption	25W
Power Method	Universal AC Input: 100-240VAC, 50/60 Hz
Power Supply	AC/DC, Internal, 36W
Networking Interfaces	(24) 10/100/1000 Mbps Ethernet RJ45 Ports (2) 1 Gbps SFP Ports
Management Interface	Ethernet In-Band
Modes	SMB Layer 2 Gigabit Ethernet Switch
ESD/EMP Protection	Air: ± 16 kV, Contact: ± 12 kV
Operating Temperature	-5 to 40° C (23 to 104° F)
Operating Humidity	10 - 90% Noncondensing
Certifications	CE, FCC, IC

LEDs

System	(1) Bootup Animation: Bootup in Progress Firmware Upgrade Icon: Firmware Upgrading Steady White: Factory Defaults, Awaiting Adoption Steady Blue: Device is Adopted
Ethernet	Green: 1G, Amber: 10/100 Mbps
SFP	Green: 1G



Specifications are subject to change. Ubiquiti products are sold with a limited warranty described at www.ui.com/support/warranty

©2020 Ubiquiti Inc. All rights reserved. Ubiquiti, Ubiquiti Networks, the Ubiquiti U logo, the Ubiquiti beam logo, UniFi, and UniFi Network are trademarks or registered trademarks of Ubiquiti Inc. in the United States and in other countries. All other trademarks are the property of their respective owners.